

-

, :
 , :
 , :
 , :
 , :
 , :

holakoik@hotmail.com

// : // :

(Noise-induced hearing loss-NIHL)

. ()

.(p< /)

/

. (/ / :%) /
 . (/ / :%) /

()

% / ()

(/ / :%)

. ()

" "

,

(.)

().

(Historical Cohort)

(.)

()

Circus,
Sound Level Meter, BSEN 60651, Type 2

() ()

(Exposed)

()

)

(

(Unexposed)

)

: (noise induced hearing loss

:

$$/ \pm /$$

$$(/ \pm /)$$

$$(/ \pm /)$$

$$.(p < /)$$

$$/ \pm /)$$

$$/ \pm /$$
Noise induced High tone loss (HTL)
hearing loss (NIHL)

) % .(

() % / ((Censoring)

.(p < /)

(Pure Tone Audiometry)

) /

. (/ / :% :

()

/ :%) /

) / (/

. (/ / :% log SPSS 11.5

p < / log rank rank

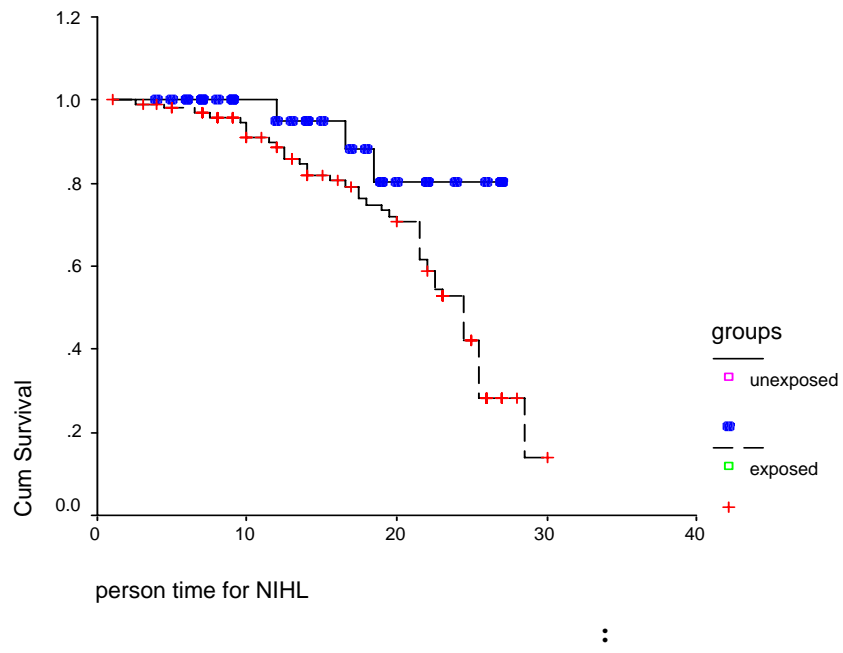
%

.(,)

/ ± /

(.

)



References

10. Bogoch Isaac I. perception about hearing protection and noise induced hearing loss of attendees of Rock concert . *Canadian Journal of public health* 2005;no96:69.
- 11- Williams W., Purdy S., Murray N., LePage E., Challinor K. |Hearing loss and perceptions of noise in the workplace among rural Australians. *Aust. J. Rural Health* (2004) 12, 115–119.