

farahbakhsh@tbzmed.ac.ir :

SPSS EPI INFO

χ^2 t

(Buse and Waxman 2001)

%

%

%

Broomberg)

Khan et al. 2004;)

(1994; Buse and Waxman 2001

(Lebaron et al. 2002; Peters et al. 2002

(Perrot et al. 1997)

(Bustreo et al. 2003)

(Contracting)

(McPake and Ngalande Banda 1994)

(Brugha and Zwi 1998)

(Young 2000)

Bechamps)

(et al. 1999

(Public – Private Mix)

(Perrot et al.1997)

%

"

:

%

Keane)

.(et al. 2002

(Service Package)

(Capitation)

McPake)

.(and Ngalande Banda 1994

"

"

"

%

SPSS EPI INFO

χ^2

t

:

/

/

(P=•/•••)

(P=•/•••)

(P=•/•••)

(P=•/••••)

/

/

(P=•/•••)

:

:

% /

% /

(P=•/••••)

:

% /

% /

(P=•/•)

:

(P=•/•••)

()

(P=•/••••)

(P=•/••••)

/

/

(P<•/••••)

(P<0/005)

Meng et al. 2000; Kaufman and Jing)
(2002

(Boller et al. 2003)

P- value

/	/ ± /	/ ± /	
/	/ ± /	± /	
< /	± /	/ ± /	()
< /	± /	/ ± /	
< /	/ ± /	/ ± /	-
/	± /	/ ± /	-
/	/ ± /	± /	-
/	/ ± /	± /	
/	/ ± /	/ ± /	
/	/ ± /	± /	

P-value

/	/	/	/	/
/	/	/	/	/
/	/	/	/	
/	/	/	/	/
/	/	/	/	/
/	/	/	/	/
/	/	/	/	/
/	/	/	/	/
/	/	/	/	/
/	/	/	/	/
/	/	/	/	/
/	/	/	/	/

/	/	/	/	/
---	---	---	---	---

/...

-

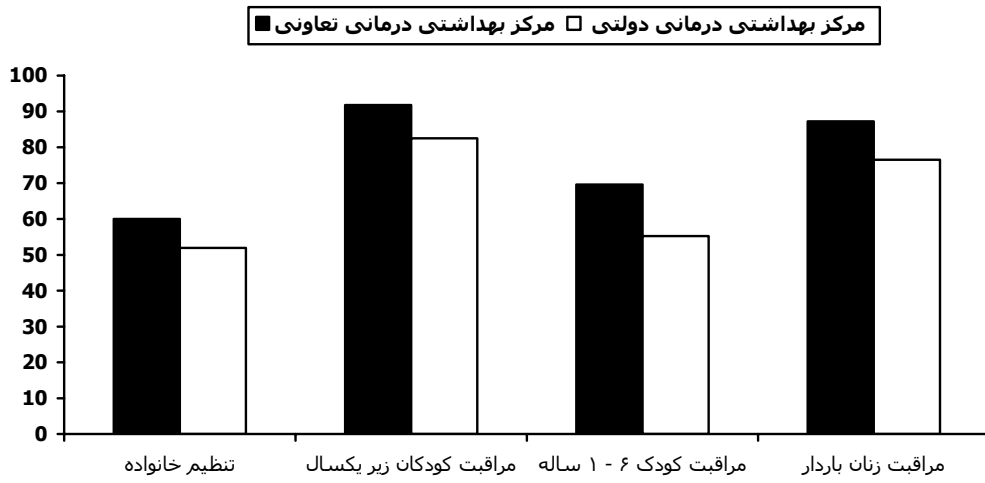
P-value

/	/	/	/	/
/	/	/	/	/
/	/	/	/	/
/		/	/	/
/	/		/	/
/	/	/		

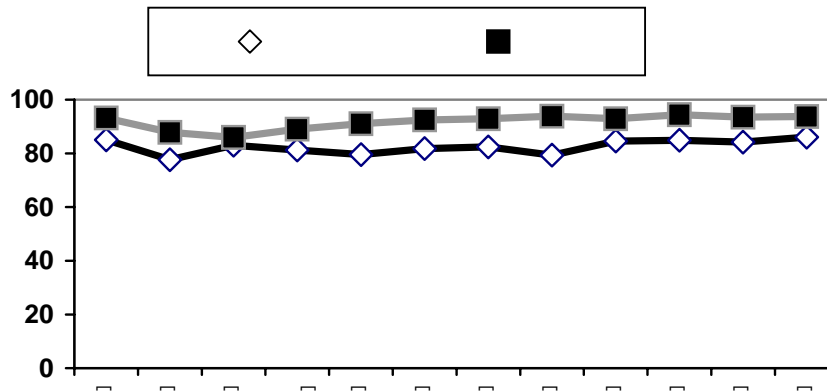
-

P-value

/	/	/	(CYP)
/		/	
/	/	/	
/	/	/	
/		/	
/	/	/	
/	/	/	
< /	/ ± /	/ ± /	
< /	/ ± /	/ ± /	
/	/ ± /	/ ± /	
/	/ ± /	± /	
/	/ ± /	/ ± /	



()



References

- Béchamps, M., Bialek, R. and Patrick, C., 1999. Privatization and public health, A Report of Initiatives and early lessons learned. A Public Health Foundation study supported by The Annie E. Casey Foundation.
- Boller, C., Wyss, K., Mtasiwa, D. and Tanner, M., 2003. Quality and comparison of antenatal care in public and private providers in the United Republic of Tanzania. *Bulletin of the World Health Organization*. **81**(2), pp.116 - 122
- Broomberg, J., 1994. Managing the health care market in developing countries: prospects and problems. *Health Policy and planning*. **9**(3), pp. 237-51.
- Brugha, R. and Zwi, A., 1998. Improving the quality of private sector delivery of public health services: challenges and strategies. *Health Policy Plan*. **13**(2), pp.107-20.
- Buse, K. and Waxman, A., 2001. Public-private health partnerships: a strategy for WHO. *Bulletin of the World Health Organization*. **79**, pp. 748-754.
- Bustreo, F., Harding, A. and Axelsson, H., 2003. Can developing countries achieve adequate improvements in child health outcomes without engaging the private sector? *Bulletin of the World Health Organization*. **81**(12), pp.886-95
- Kaufman, J. and Jing, F., 2002. Privatization of health services and the reproductive health of rural Chinese women. *Reproductive Health Matters*. **10**(20), pp.108-16.
- Keane, C., Marx, J., Ricci, E. and Barron, G., 2002. The Perceived Impact of Privatization on Local Health Departments. *American Journal of Public Health* **92**(7), pp.1178 - 1180.
- Khan, M.M., Khan, S.H, Walker, D., Fox-Rushby, J., 2004. Cost of delivering child immunization services in urban Bangladesh: a study based on facility-level surveys. *Journal of Health, Population and Nutrition*, **22**(4), pp.404-12.
- LeBaron, C.W., Lyons, B., Massoudi, M. and Stevenson, J., 2002. Childhood vaccination providers in the United States. *American Journal of Public Health*. **92**(2), pp.266-70.
- McPake, B. and Ngalande Banda, E., 1994. Contracting out of health services in developing countries. *Health Policy and Planning*. **9**(1), pp. 25-30.
- Meng, Q., Liu, X. and Shi, J., 2000. Comparing the services and quality of private and public clinics in rural China. *Health Policy Plan*. **15**(4), pp.349-56.
- Perrot, J., Carrin, G. and Sergent, F., 1997. The contractual approach: new partnerships for health in developing countries, WHO.
- Peters, D.H., Yazbeck, A.S., Sharma, R.R., Ramana, G.N.V., 2002. Better Health Systems for India's Poor. Washington, DC: World Bank.
- Young, S., 2000. Outsourcing: Lessons from the literature. *Labour and Industry*. **10**(3), pp. 97- 117.